

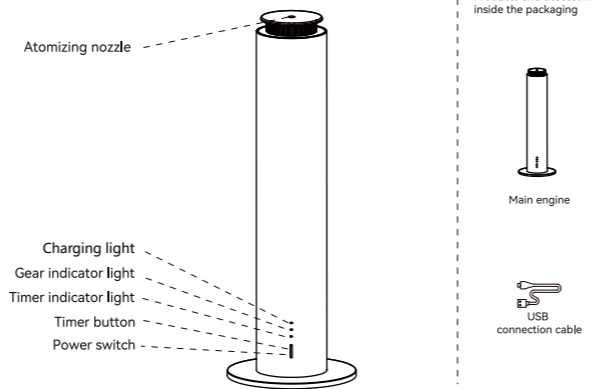
# Manual

## 01 Attention

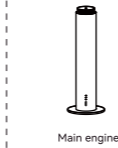
- Do not use overloaded power sockets, damaged power cables or adapters, otherwise your safety may be endangered. To avoid fire hazards, please replace them in time if found to avoid fire hazards.
- If you are not a technician, please do not try to modify, disassemble, or repair the equipment to avoid damage to the equipment.
- If an abnormality occurs in the equipment, please check whether it is operated according to the normal usage requirements, or please check according to the troubleshooting. If the problem cannot be solved, please contact the seller in time.
- When adding essential oils, please do not drop essential oils into the device, and the device must not be turned upside down or tilted when in use.
- If the equipment needs to be transported to other locations, please maintain and clean the equipment (see Equipment Maintenance for details) before packaging and transporting to avoid essential oil penetration and damage to the equipment.
- Please maintain and clean the equipment regularly to ensure that the equipment remains in optimal working condition.



## 02 Introduction

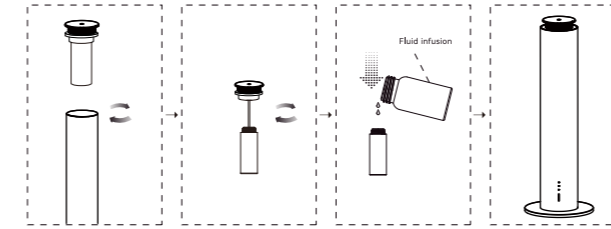


Products and accessories inside the packaging



## 03 Usage method

How to fill the oil bottle  
**[ Use waterless essential oil to ensure the normal operation of the machine ]**



- Rotate and remove the atomizer head.
- Rotate and remove the essential oil bottle.
- Add essential oil to a specialized bottle.
- Install and ensure the atomizer head is tightened completely.

### Essential oil replacement

- △ 1. Please stop the device for 2 minutes before adding essential oils again, and unscrew the essential oil bottle after the essential oils inside the mold head return.
- △ 2. It is recommended to control the amount of essential oil added within 45 days each time to avoid deterioration of essential oil due to oxidation.

## 04 Function description

### About Charging Indicator

Plugging in USB will automatically charge

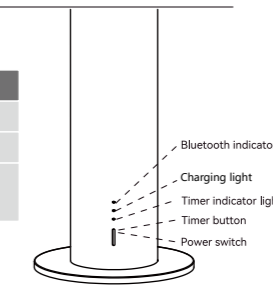
Indicator	Instructions
Charging	Indicator periodically blinks
Fully charged	Indicator light is on
Low battery	The light blinks at the same time, and the diffuser automatically turn off after five seconds

### Work level indicator

Low "I": working 15s, stop 200s
High "III": working 15s, stop 100s

### Timing indicator

Light on 2h : work for 2h then turn off
Light on 4h : work for 4h then turn off
Light on 8h : work for 8h then turn off



## 05 App description

### Buletooth App

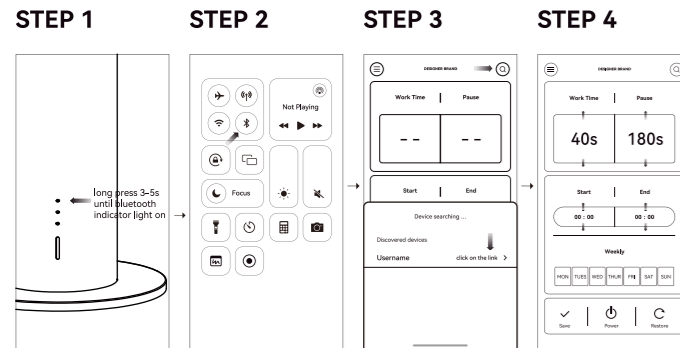
- Download App for smartphone: scan the following App QR and choose to download app corresponding to iOS or Android system
- Long press the "Ⓜ" button for 3s-5s switch to Bluetooth mode [On the contrary, long press the "Ⓜ" button again for 3s-5s switch back to Button Mode]
- Turn on Bluetooth mode on your cell phone
- Turn on your APP, click the search button "Q" in the upper right corner to connect to the device, and then you can control the diffuser with your smartphone.

**Note:** One diffuser can only connect to one mobile phone, if others need to connect, the previous person needs to disconnect Bluetooth.



ios/Android

## 06 Application Operation Diagram



## 07 Maintenance

In order to ensure the best fragrance diffusion effect, customers are requested to inspect and maintain the equipment every **two months**. When new fragrance types need to be replaced or the fragrance diffusion effect is weakened, the equipment should also be maintained:



1. Unscrew the used oil bottle.



2. Pour a suitable amount of alcohol into the oil bottle and clean the bottle.



3. After cleaning, pour a small amount of alcohol into the bottle and install it in the diffuser, and turn on the diffuser working for 5-8 minutes.



4. After the diffuser is cleaned, turn off the power.

## 08 Data references

For Reference	
Power Consumption Under full charge	146 hours in first gear
	44 hours in second gear
Oil consumption (mL/h)	First gear: 0.16mL (one bottle of essential oil can be used for 750 hours)
	Third gear: 0.5mL (a bottle of essential oil can be used for 240 hours)

## 09 Parameters

Product name	Aroma Diffuser	Noise	≤40dB
Model	H200D	Coverage	300m <sup>3</sup>
Material	Aerial Aluminum Alloy	Product certification	FCC,CE,RoHS
Rated Power	≤10W	Product Size	Φ120*338mm
Rated Voltage	5V=	Package Size	156*187*412mm
Essential Oil Volume	120ml	Net Weight	0.9kg
Battery Capacity	5000MAH	Overall Weigh	2.3kg

## 10 Troubleshooting

Troubleshooting: \*Please refer to the instructions below for diagnosis and attempt to repair before requesting a return to the factory for repair.

Fault type	Method of exclusion
Device not working	①Please check whether the power adapter is DC5V-2A and the DC end has been inserted correctly? ②Is the working program set by the equipment currently in working hours?
No atomization, small atomization	① Is the air pump working? ② Is there an airflow atomizing core at the mist outlet, and whether the oil suction pipe is loose or blocked? Is the sealing ring of the air nozzle damaged or falling off? ③whether the atomizer head is tightened completely.
Oil spill	Whether the essential oil bottle and the atomizing head are tightened, whether the sealing ring of the atomizing head is deformed or damaged.

