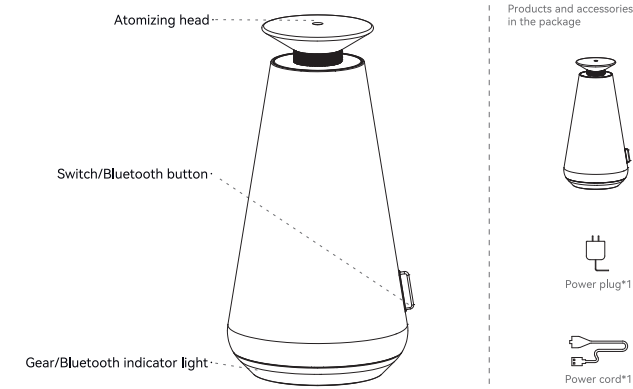


Manual

Decopro

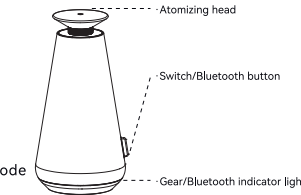
01 Introduction



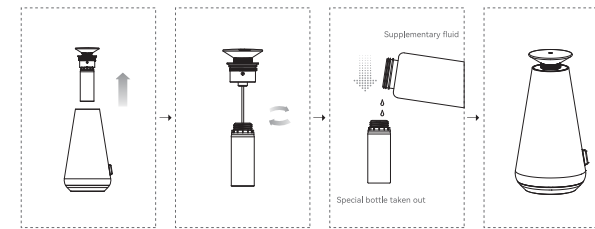
02 Function description

● The product uses an all-aluminum alloy body, equipped with a 2.5L flow air pump, and a 100ml essential oil bottle. The atomization volume per hour is about 1.2g, the maximum power is 10W, and the diffusion range is 300 m³.

- ① Click the "⏻" to turn on.
- ② Click the "⏻" to switch between low, medium and high stand-alone gears.
- ③ open 15s, pause 200s.
open 15s, pause 100s.
open 15s, pause 60s.
- ④ The input and output power supply is 5V and the current is 2A.
- ⑤ Press and hold the "⏻" for 3s. Switching Bluetooth mode can adjust the gear through the applet, Press and hold "⏻" again for 3s to switch back to stand-alone mode
- ⑥ Click the "⏻" to display the gear. Gear one is [white], gear/Bluetooth indicator light. Gear two is [yellow]. Gear three is [blue]. Bluetooth is [purple].



03 Usage method



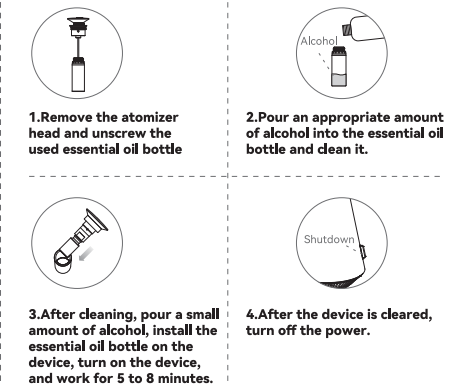
1. Rotate and take out the atomizer head.
2. Turn out the essential oil bottle.
3. Add scent oils to special bottles.
4. Install the atomizer head and it is ready to use.

Instructions for using scent oils:

- △1. Please stop the equipment for 2 minutes before adding essential oils again, and then remove the essential oil bottle after the essential oils inside the atomizer head return.
- △2. It is recommended that the amount of essential oil added should be controlled within 45 days each time to avoid deterioration of essential oils due to oxidation.

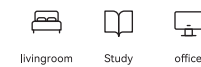
04 Maintenance

In order to ensure the best fragrance diffusion effect, customers are requested to inspect and maintain the equipment every six months. When new fragrance types need to be replaced or the fragrance diffusion effect is weakened, the equipment should also be maintained:



05 Parameters

Product name	Decopro	Product type	Diffuser
Product type	Desktop diffuser	Product size	Φ112*222mm
Maximum power	10W	Net Weight	1.5kg
Input power	DC5V-2A (TYPE-C)	Overall weight	2kg
Coverage	Up to 800ft ²	Packing list	Diffuser + Power plug + Power cord
Battery capacity	5000MAH	Machine noise	≤30dB
Oil bottle capacity	50ML		



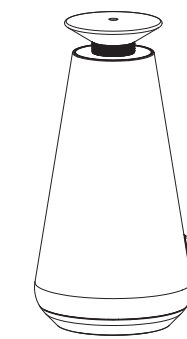
06 Troubleshooting

Please refer to the following instructions to diagnose and attempt repairs before requesting return to the factory for repair:

Fault type	Method of exclusion
The device is not working	①Please check whether the power adapter is DC5V-1A and the DC end has been correctly inserted. Is the designed working program of the device currently within the working time range?
No atomization, small atomization	①Is the air pump working? ②Is there an airflow atomizing core at the mist outlet, is the oil suction pipe loose or blocked, is the air nozzle sealing ring deformed or damaged and falling off?
Oil leakage	Whether the essential oil bottle and atomizer head are tightened, and whether the sealing ring of the atomizer head is deformed or damaged.
Abnormal noise	①The air pump is loose and re-fix the air pump ②The air pump is damaged, replace it with a new one

07 Attention

- Do not use overloaded power sockets, damaged power cables or adapters, otherwise your safety may be endangered. To avoid fire hazards, please replace them in time if found to avoid fire hazards.
- If you are not a technician, please do not try to modify, disassemble, or repair the equipment to avoid damage to the equipment.
- If an abnormality occurs in the equipment, please check whether it is operated according to the normal usage requirements, or please check according to the troubleshooting. If the problem cannot be solved, please contact the seller in time.
- When adding essential oils, please do not drop essential oils into the device, and the device must not be turned upside down or tilted when in use.
- If the equipment needs to be transported to other locations, please maintain and clean the equipment (see Equipment Maintenance for details) before packaging and transporting to avoid essential oil penetration and damage to the equipment.
- Please maintain and clean the equipment regularly to ensure that the equipment remains in optimal working condition.



Decopro