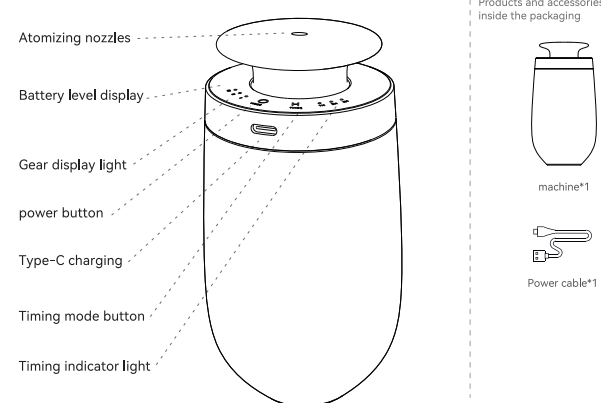


# Car Aroma Diffuser Manual

CarProIII

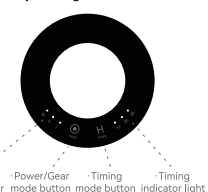
## 01 Introduction to each component



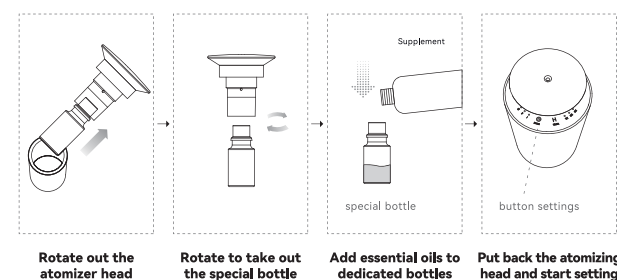
## 02 Functional description

- The product uses an all-aluminum body, a 1.5L flow rate air pump, and a 10ml essential oil bottle. The atomization volume is about 0.2g per hour, the maximum power is 1W, and the diffusion range is 100sqft.
  - Low: working 15s, stop 200s
  - Mid: working 15s, stop 100s
  - High: working 15s, stop 60s
- The timing is 1, 2, 3 hours, which indicator lights up is the corresponding timing time.
  - The 3 lights are on at the same time to enter the start-stop mode
  - The lights are on in sequence when charging, and the 3 lights on the left are always on after fully charged. Control panel operation instructions
  - The light flashes for 5s to shut down when in love. (electrical ground capacity 2000mA)
- Device status display
  - When charging: gear light cycle effect
  - When fully charged: the gear light is always on.
  - When the battery voltage is lower than 3.2V, three gear indicator lights flash together, and automatically turn off after five seconds.
- Start-stop mode
  - Press the timing button until the three timing indicators light up at the same time to enter the start-stop mode.
  - After entering the start-stop mode, the gear can be adjusted by itself, and the three-minute cycle is automatically sensed. You can also press the timer button until the single timer indicator lights up to exit the start-stop mode.

### Control Panel Operating Instructions



## 03 Instructions

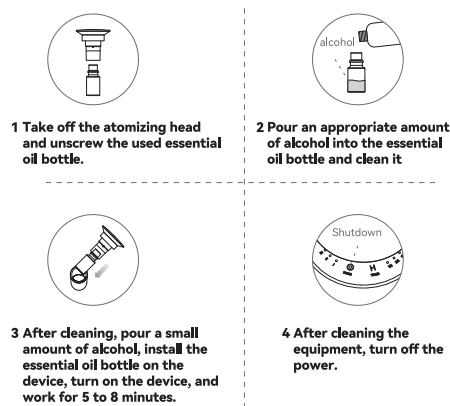


**Instructions for the use of essential oils**

- Please stop the device for 2 minutes before adding essential oils again, and unscrew the essential oil bottle after the essential oils inside the mold head return.
- It is recommended to control the amount of essential oil added within 45 days each time to avoid deterioration of essential oil due to oxidation.

## 04 Maintenance

\*Optimal maintenance time: once every 6 months;  
\*Need to change different flavors essential oils;  
\*The diffuser function is weakened.



## 05 Basic parameters

Product name	Car aroma diffuser	Product type	Aroma diffuser
Product model	CarProIII	Product size	145*Φ63mm
Maximum power	1.2W	Net Weight	0.29kg
Input power	DC5V-1.5A (Type-C)	Overall weight	0.8kg
Coverage	50-100m <sup>2</sup>	Packing List	1pc Aroma Diffuser +1pc charge cable
battery capacity	2000MA	Machine noise	≤30dB
Essential oil capacity	10ML	Atomization volume per hour	0.2g

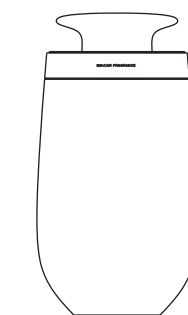
## 06 Troubleshooting

Refer to the following instructions to diagnose and attempt repairs before requesting a factory repair:

Fault Type	Method of exclusion
Device not working	<ol style="list-style-type: none"> <li>Please check whether the power adapter is DC5V-1A and the DC end has been inserted correctly?</li> <li>Is the working procedure set by the equipment in working hours?</li> </ol>
No atomization, small atomization	<ol style="list-style-type: none"> <li>Is the air pump working?</li> <li>Is there an airflow atomizing core at the mist outlet, and whether the oil suction pipe is loose or blocked? Is the sealing ring of the air nozzle damaged or falling off?</li> </ol>
Oil spill	Whether the essential oil bottle and the atomizing head are tightened, whether the sealing ring of the atomizing head is deformed or damaged
Abnormal noise	<ol style="list-style-type: none"> <li>The air pump is loose, fix the air pump again</li> <li>The air pump is damaged, replace it with a new one</li> </ol>

## 07 Attention

- Do not use overloaded power sockets, damaged power cables or adapters, or your safety may be endangered. To avoid fire hazards, please replace them in time if found.
- If you are not a technician, please do not attempt to modify, disassemble, or repair the device to avoid damage to the device.
- If the device is abnormal, please check whether it is operating according to the normal use requirements, or check according to the troubleshooting, if you can't solve it, please contact the seller in time.
- Do not invert or tilt the device when in use.
- If the equipment needs to be transported to other sites, please maintain and clean the equipment first (see Equipment Maintenance for details) before packaging and transporting to avoid damage to the equipment from penetration of essential oils.
- Please maintain and clean the equipment regularly to ensure that the equipment is in the best working condition.
- Do not disassemble the machine to avoid affecting the use effect.



Product model: CarProIII



Vehicle livingroom Study office